

**PROPOSED  
REFURBISHING FOR  
GREEN HILLS BRANCH**

# Showing Proposed Front View









**Showing the front view and on the left side shows portion of RCBC's ATM machine**





# Proposed Floor Plan / Lay out

# Ground Level

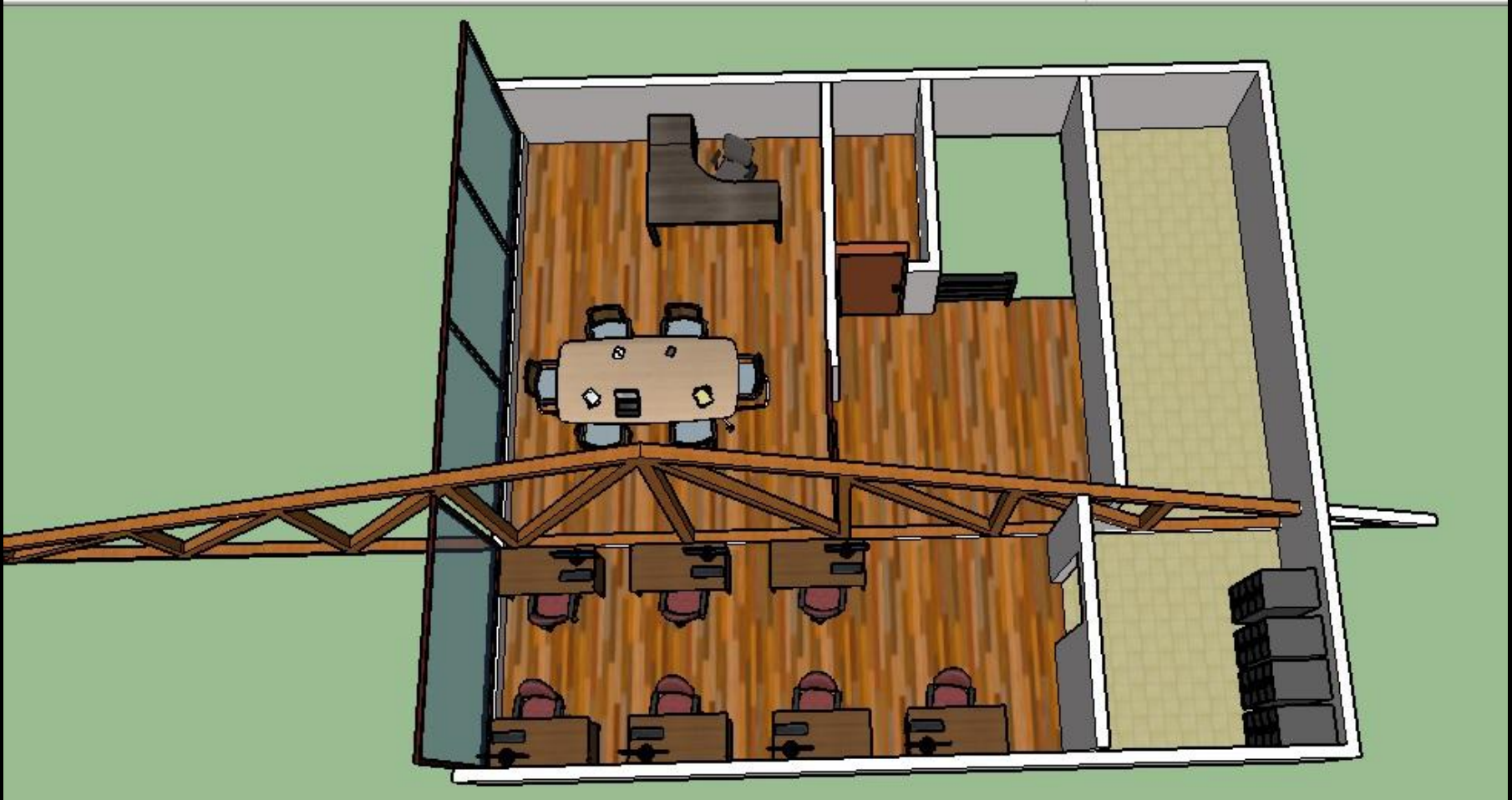


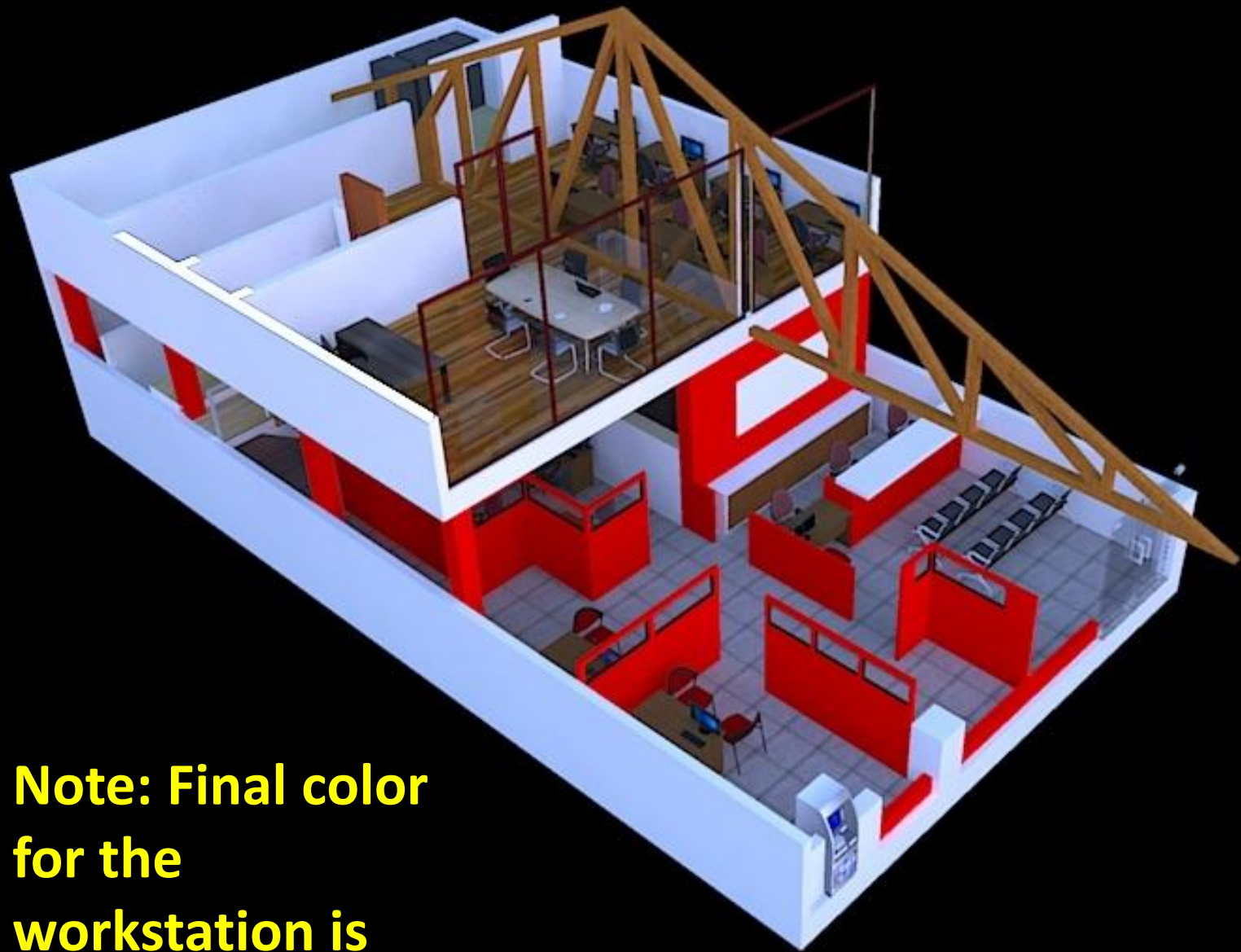




# LOFT LEVEL

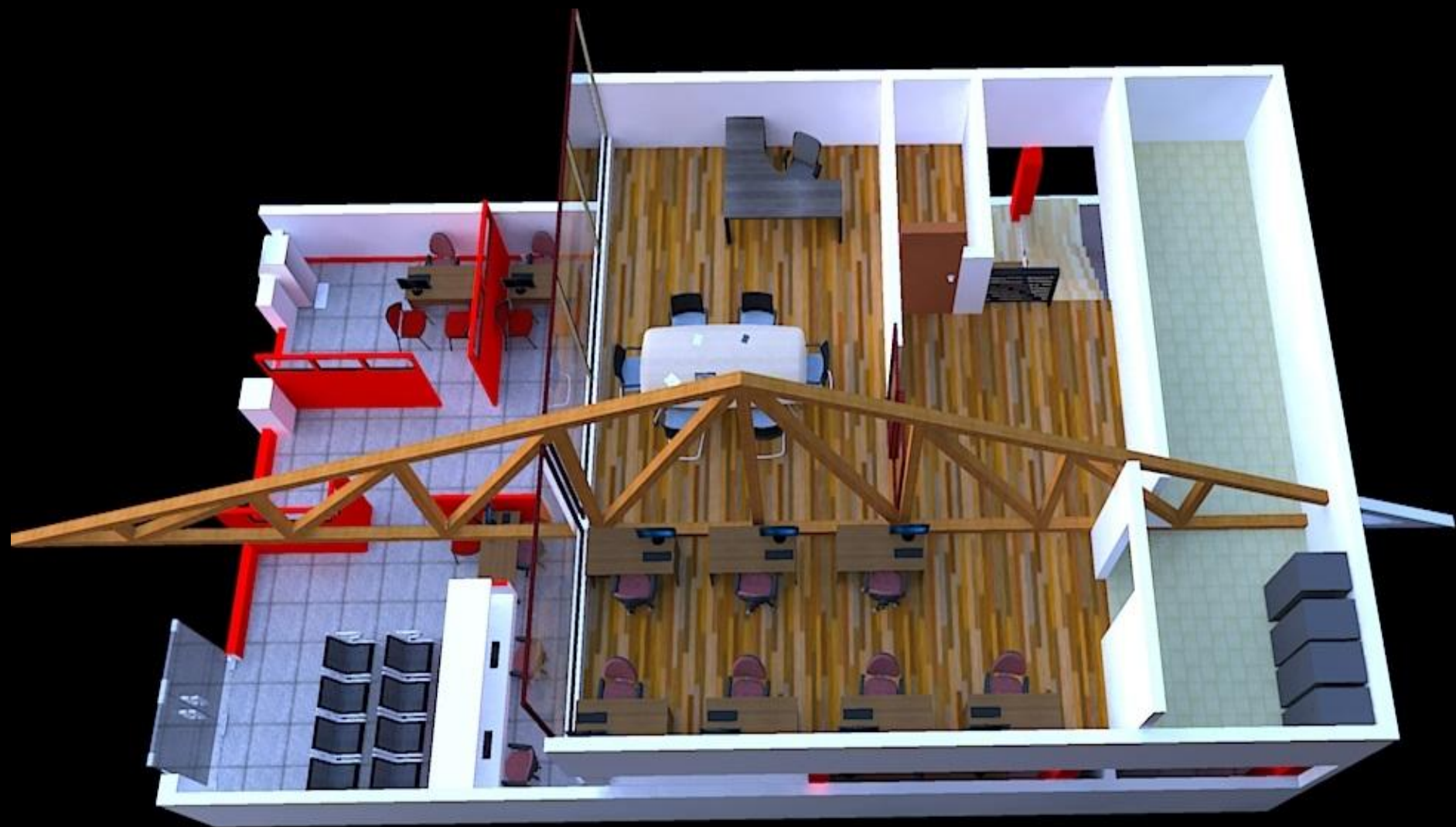
(Note: truss shown shall be covered in actual refurbishing)



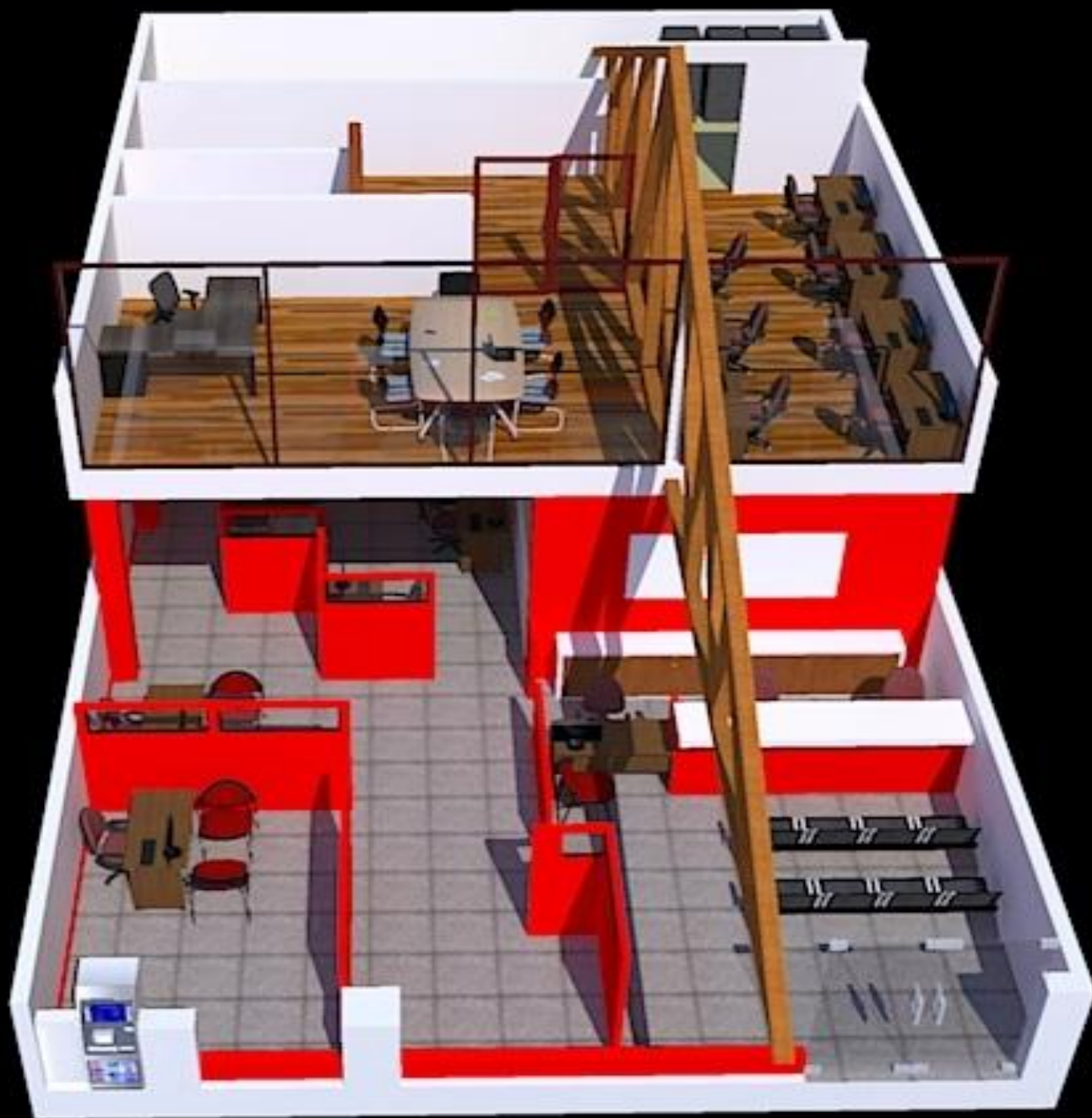


**Note: Final color  
for the  
workstation is  
Gray**









# **VIEWS INSIDE THE BRANCH**

# View from Entrance Door (showing Teller's area and portion of Back Office)



# View from Entrance Door (showing New accounts table, form slip area, manager's area





# View from Entrance looking up (showing conference room and ACFIN area)



# View from NAC area (showing waiting area, slip form area and entrance door)



# View from NAC area (showing Manager's area and AO's table)



# View from lounge area (showing teller's area)





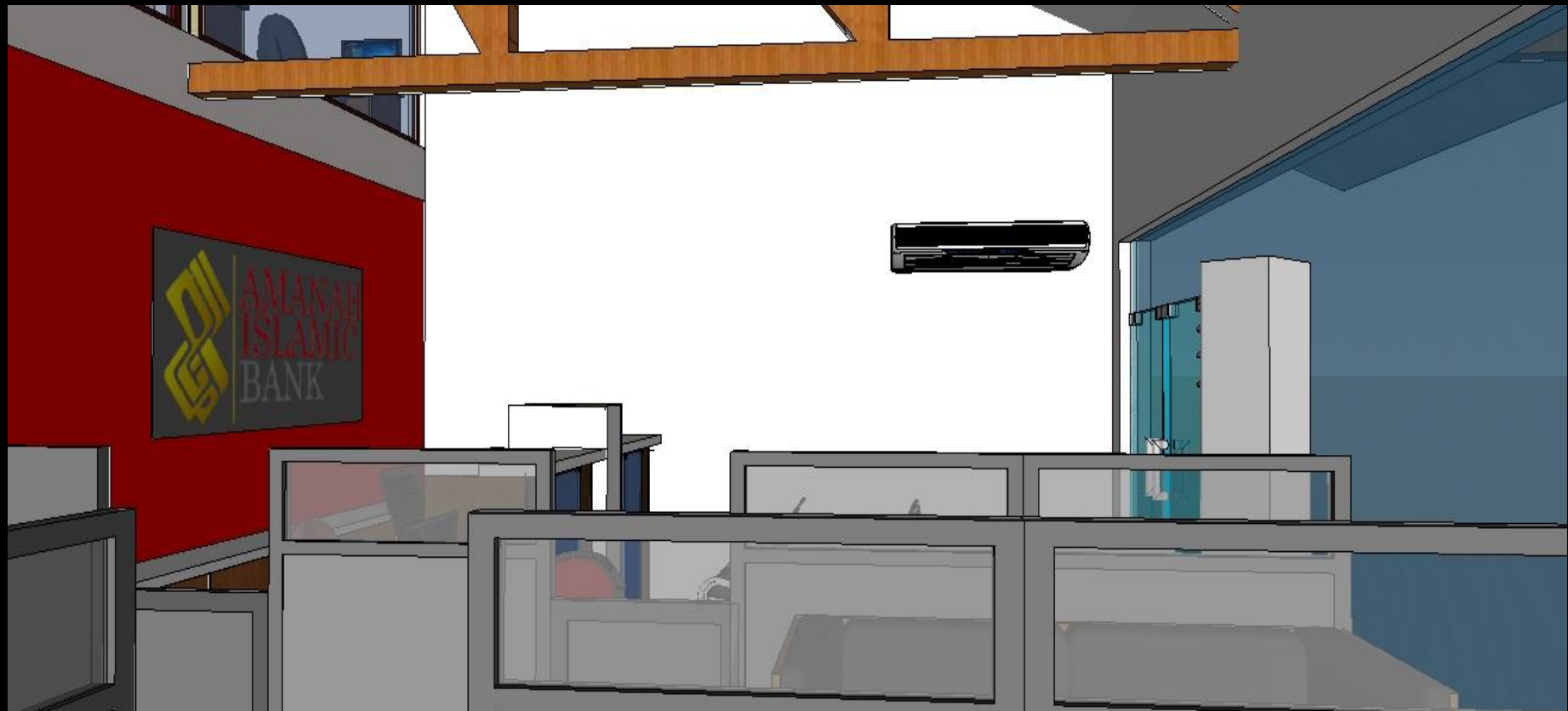
# View from Lounge area (showing back office area, staircase and portion of NAC on the right)



# View from Manager's area (showing teller's area, back office and staircase)



# View from Manager's area (showing teller's area, waiting area)



**View from hallway (showing portion  
of back office, AO's table, BH's area,  
waiting area and entrance)**





# View from beside the Stairs (showing back office, vault door, AO's and BH's area, entrance door)



# Showing Treasury's Area



**View from landing of stairs (showing  
back office, vault door, AO's & BH's  
area, lounge and entrance)**



# ACFIN and Conference access doors





# Conference and Prayer room's door



# Showing the Conference room



**View from conference room down to  
ground level (showing Waiting and lounge  
area and entrance door)**



# Showing ACFIN's area





**View from ACFIN's area down to ground level (showing waiting area, slip form area, lounge and BH's area)**



**THE END**